





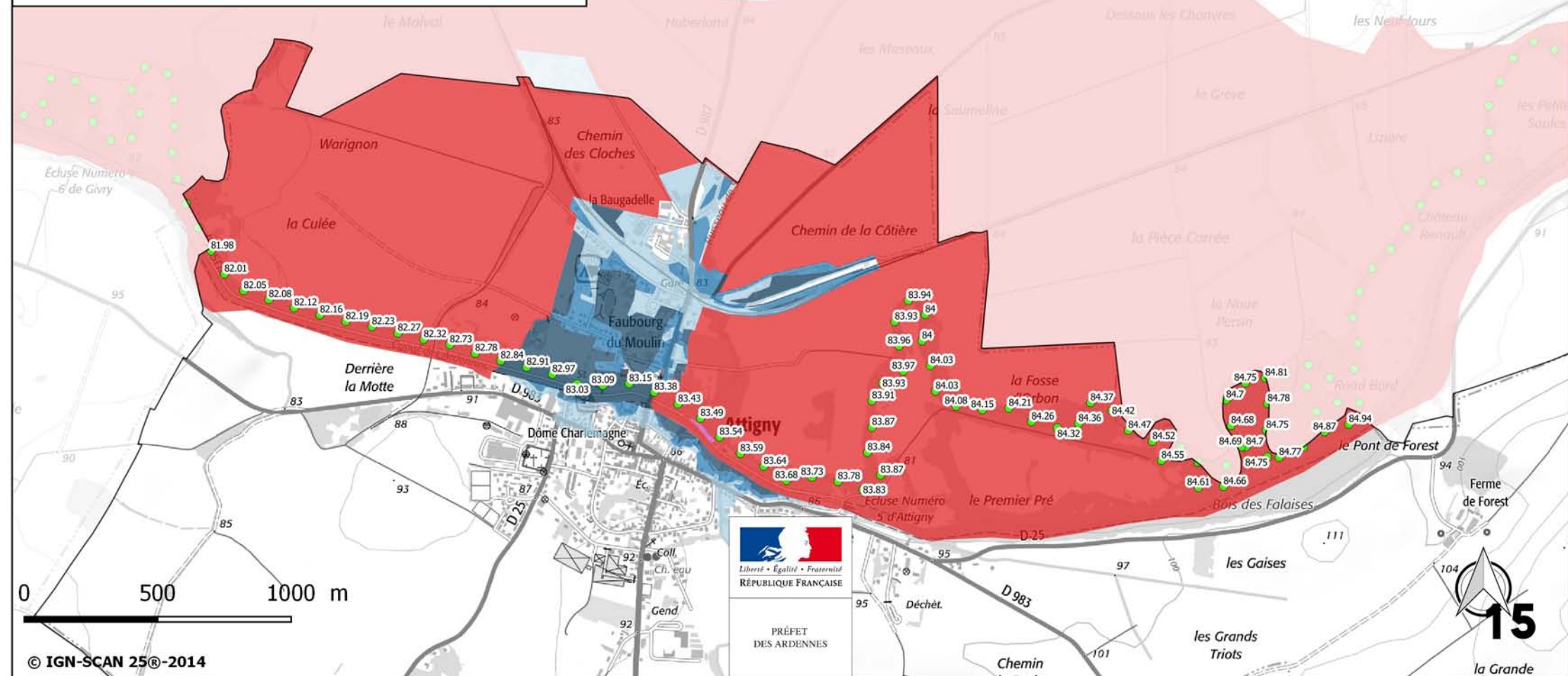


PPRI de la vallée de l'Aisne

Approuvé le 19 février 2018

Zonage réglementaire 15 - Commune d'Attigny







-  Zone Rouge
-  Zone Rose - hauteur de l'eau < 1 m
-  Zone Bleu clair - hauteur de l'eau < 0.5 m
-  Zone Bleu moyen - hauteur de l'eau entre 0.5 m et 1 m
-  Zone Bleu foncé - hauteur de l'eau > 1 m
-  cote de crue centennale

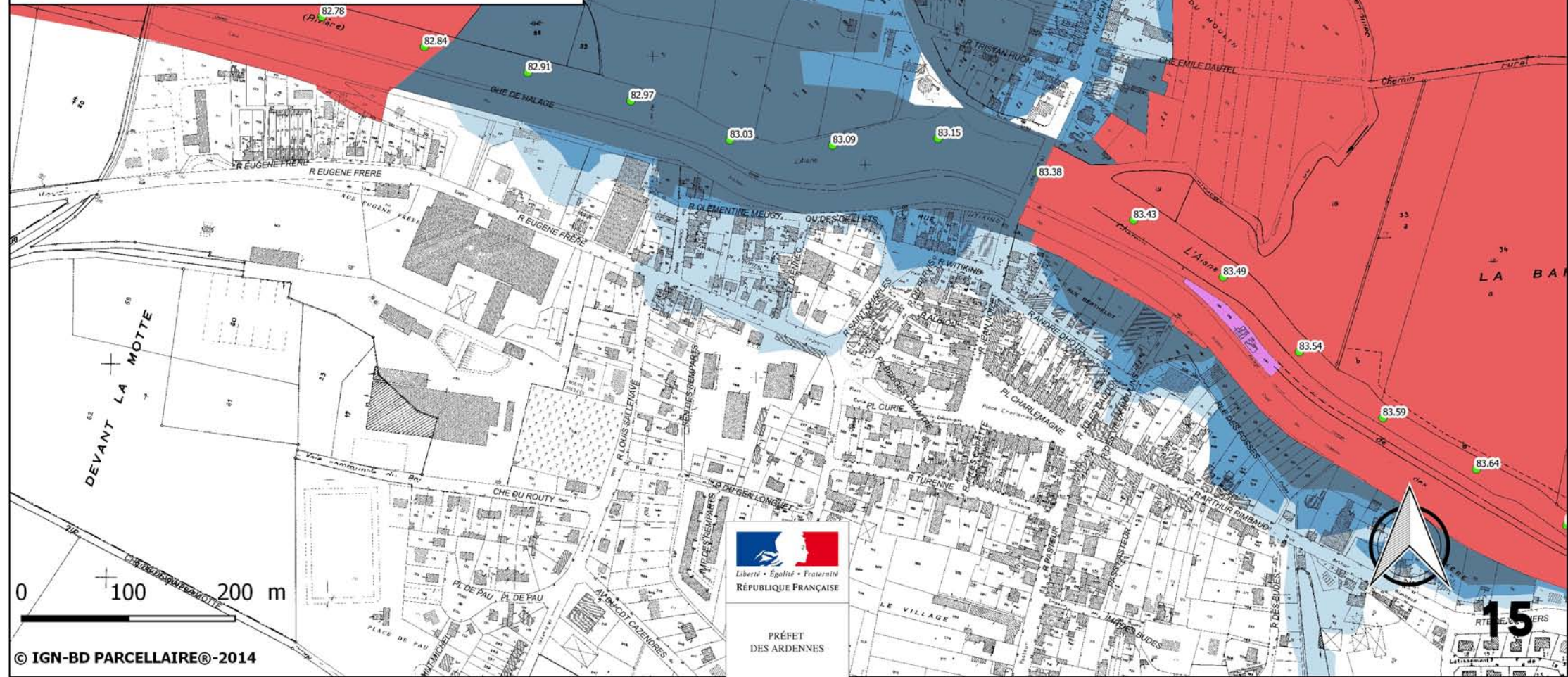


PPRI de la vallée de l'Aisne

Approuvé le 19 février 2018

Zonage réglementaire 15 - Commune d'Attigny



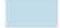



-  Zone Rouge
-  Zone Rose - hauteur de l'eau < 1m
-  Zone Bleu clair - hauteur de l'eau < 0.5 m
-  Zone Bleu moyen - hauteur de l'eau entre 0.5 m et 1 m
-  Zone Bleu foncé - hauteur de l'eau > 1 m
-  cote de crue centennale

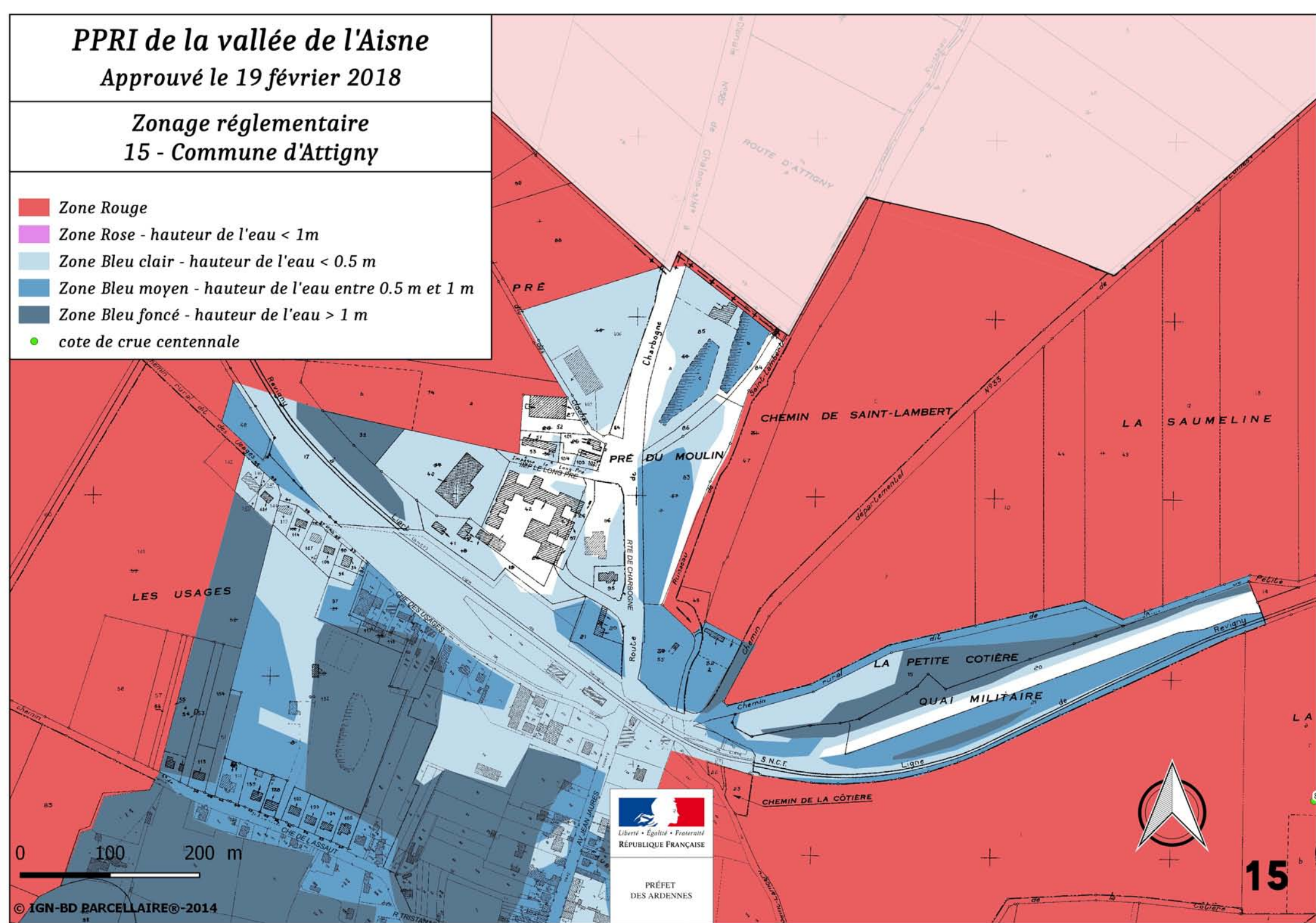


PPRI de la vallée de l'Aisne

Approuvé le 19 février 2018

Zonage réglementaire 15 - Commune d'Attigny

-  Zone Rouge
-  Zone Rose - hauteur de l'eau < 1m
-  Zone Bleu clair - hauteur de l'eau < 0.5 m
-  Zone Bleu moyen - hauteur de l'eau entre 0.5 m et 1 m
-  Zone Bleu foncé - hauteur de l'eau > 1 m
-  cote de crue centennale



PRÉFET
DES ARDENNES